

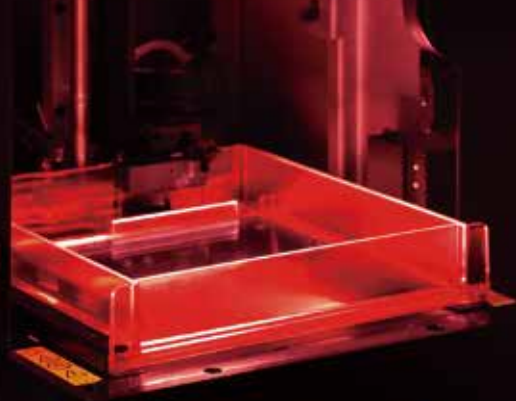


# PartPro150 xP

**Accelerate Ideas**

## Enlarged Build Area Ideal for More Applications

With a build area of 150 × 150 × 200 mm and a X-Y resolution of 130 microns, the PartPro150 xP is a SL printer ideal for producing parts which require smooth surface finishes.

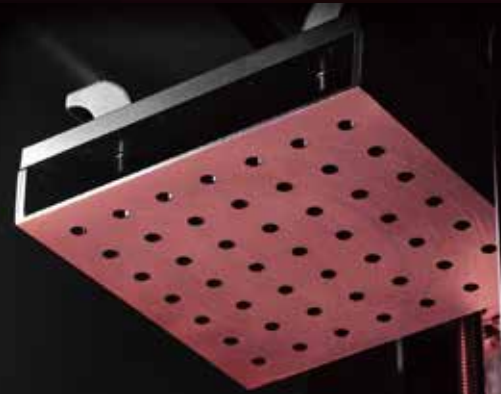


## Precision Components & Long-life Tank

Heated resin system with a wiper provides stable production throughout the printing process. The PDMS tank features a patent-pending coating, that ensures a long-life and enables higher productivity.

## Hands-free Auto-calibration

The PartPro150 xP features an auto-calibration that detects the positioning of the print platform and the resin tank. Simply load the resin to start the print.



## Multiple Engineering Resins

You can always find the right material for your application including tough, high-strength, high temperature capable, flexible and more soon to be released XYZprinting materials.



## Specifications

<b>Print Technology</b>	SL (Stereolithography)	<b>Display Language</b>	Multilingual
<b>Max. Build Area (WxDxH)</b>	5.9" x 5.9" x 7.8" (150 × 150 x 200 mm)	<b>Printing Software</b>	XYZprint AM <sup>UV</sup>
<b>Layer Resolution</b>	25 / 50 / 100 / 200* microns (*Material dependent)	<b>Operating Systems</b>	Windows 10 / 10 Pro (64-bit) macOS 10.12 and above
<b>X-Y Resolution</b>	130 microns	<b>Power Requirements</b>	100V - 240V 60W
<b>Supported File Formats</b>	.stl / XYZ format (.3ws / .3wn)	<b>Connectivity</b>	USB Cable / Wi-Fi / Ethernet
<b>Light Source</b>	UV Laser λ 405nm	<b>Product Dimensions (WxDxH)</b>	11.0" x 13.3" x 23.4" (280 x 337 x 595 mm)
<b>Material Compatibility</b>	ProBasic / ProPreciseSL	<b>Product Weight</b>	28.7 lbs (13 kg)
<b>Display</b>	5" Touch Panel LCD		

\* All price, feature and specification are subject to change without prior notice.